

# KSSSS 2026

The 43<sup>rd</sup> International Congress of  
Korean Society of Spine Surgery  
May 20 (Wed) - 22 (Fri), 2026  
Lotte Hotel Seoul (Sogong-dong), Seoul, Korea



# Tuberculous spondylitis following percutaneous endoscopic lumbar discectomy (PELD): A case report

**Ma. Gicelle Christine U. Ambulo, MD**

**Buenaventura Alfredo B. Canto IV, MD, FPOA**

Makati Medical Center

**MMC**  
MAKATI MEDICAL CENTER

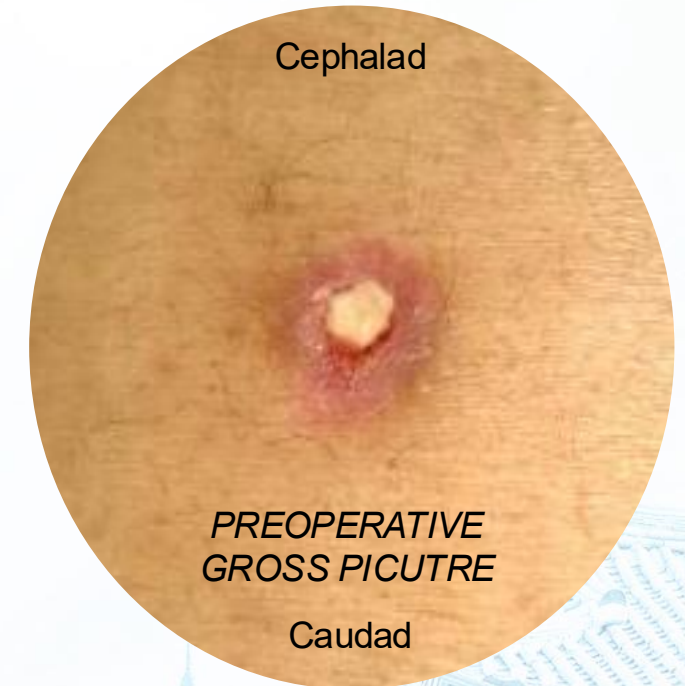


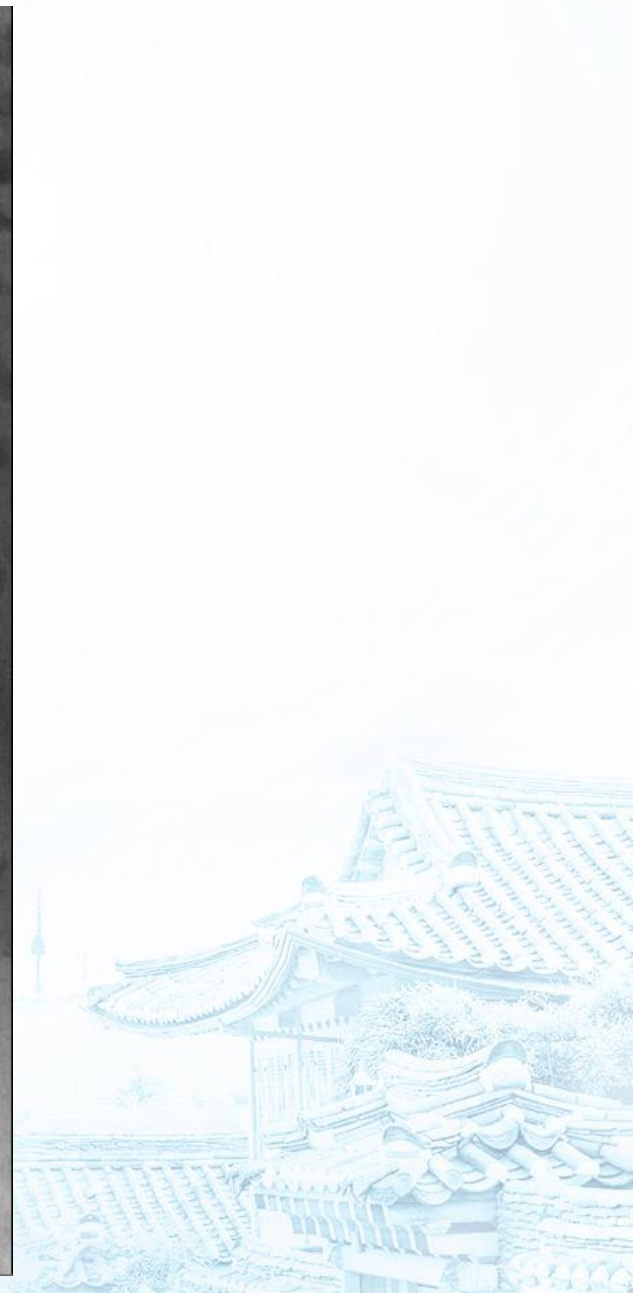
# Overview

- Tuberculosis (TB) is endemic in the Philippines
  - Significant public health concern
- **TB spondylitis or Pott's disease** following minimally invasive spine surgery is exceedingly rare
- Case report on TB spondylitis diagnosed eight months after endoscopic spine surgery

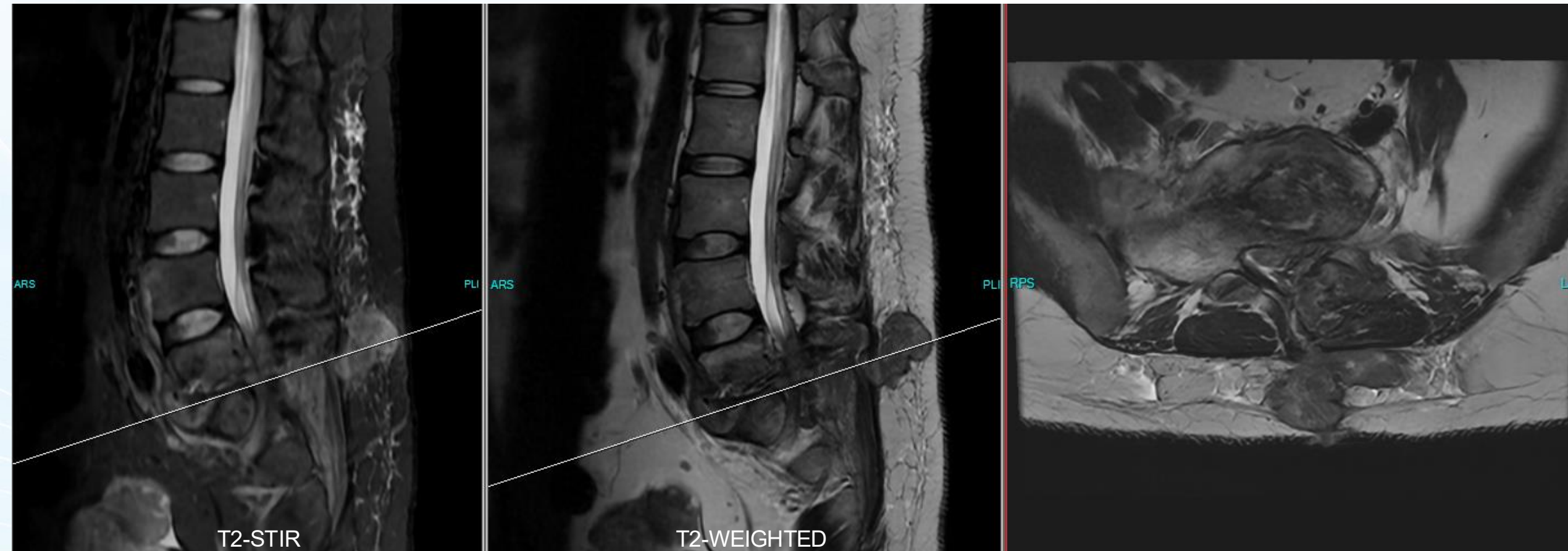
# 30F, no known comorbidities

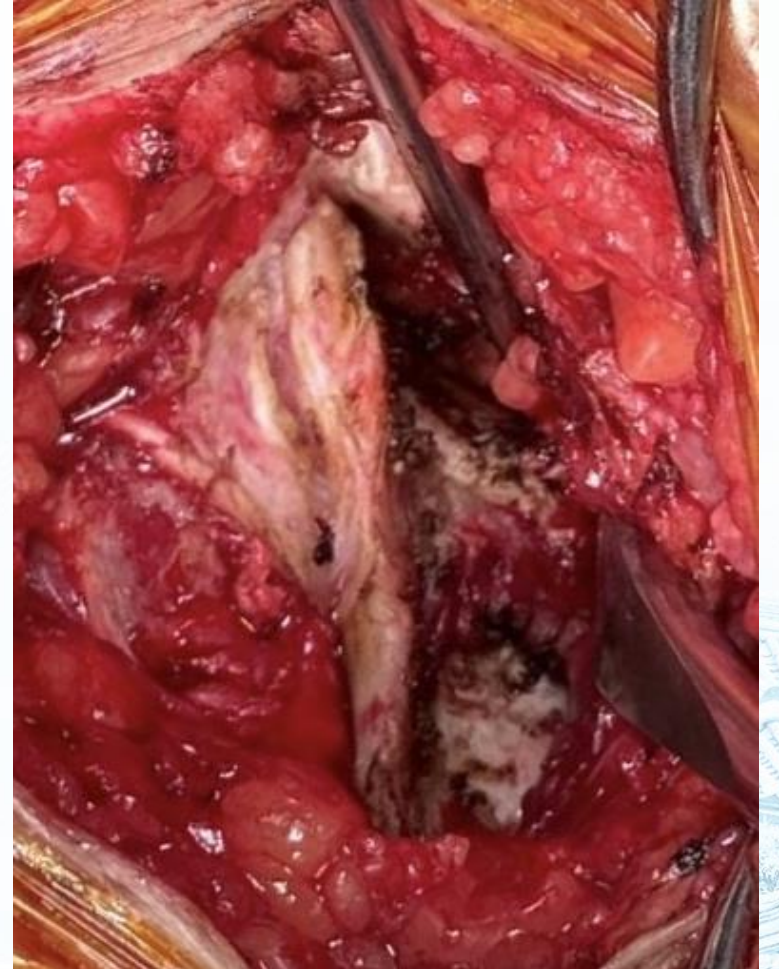
- 8 months prior
  - PELD L5-S1 left for symptomatic LDH
  - **Resolution** of radiculopathy
  - Sinus on surgical site → resolution with oral antibiotics
- 1 month prior
  - **Recurrence** of sinus on surgical site
  - Low back pain, radiculopathy
  - (+) Significant household exposure of TB





# L5-S1





Age : 30Y  
Physician : CANTO, BUENAVENTURA BENITEZ

Source : EMR  
Room No : 1672

Lab No : 25072330  
Ordered : 29-JAN-2025 11:05AM  
Received : 29-JAN-2025 11:41AM  
Released : 02-JUL-2025 11:50AM

Test Name

TB C/S

SPECIMEN : ABSCESS, PARASPINAL

FINDINGS :

CULTURE AND SENSITIVITY DONE BY BACTEC MGIT TB SYSTEM

TIME AND DATE OF COLLECTION: 1057H 29-JAN-2025

SITE OF COLLECTION: L5 - S1

NOTE: PLEASE CORRELATE CLINICALLY

ACCESSION NO.: 158

ISOLATE 1 : *Mycobacterium tuberculosis*

COLONY COUNT : ISOLATED IN 4 WEEKS INCUBATION

Susceptibility	Isolate 1
Ethambutol 5.0 ug/mL	S
Isoniazid 0.1 ug/mL	S
Pyrazinamide 100ug/mL	S
Rifampin 1.0 ug/mL	S
Streptomycin 1.0 ug/mL	S

# Discussion

- TB infection occurring after spine surgery is rare
- **Microbiological confirmation** remains as the gold standard for diagnosis
- Possible etiologies
  - Hematogenous spread
  - Latent TB re-activation
- Awareness for early diagnosis and prompt management significantly impacts patient outcomes

# Conclusion

- As the use of endoscopic techniques become increasingly prevalent, clinicians must remain **vigilant** about potential infectious complications, including that of tuberculous spondylitis, especially in endemic areas such as the Philippines